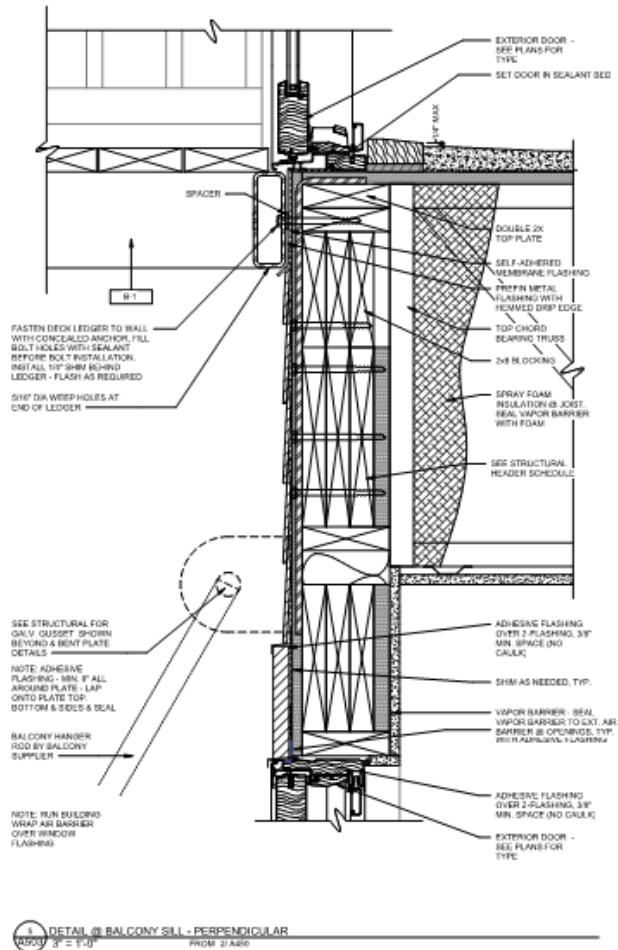


Details

Depicts a two-dimensional piece of the building in the highest detail provided. Details can be horizontal or vertical in nature (detailed view of a floor plan or wall section). Includes:

- Key dimensions
- Materials
- Relationship of materials to each other (specifically relating to the exterior)
- Key features specific to that part of the building
- Description of material assemblies
- Any other items needed to convey the design intent to trade contractor building the project
- Can be a variety of drawing scales but typically 1-1/2" = 1'-0" or 3" = 1'-0"



Other

Additional items typically included within a set of construction documents include:

- Life-safety code applications
- Fire-rated wall and floor assemblies
- Exiting requirements for the building
- Door and window dimension with construction detailing
- Door hardware requirements
- Tables/spreadsheets showing all interior finishes for floors, walls, and ceilings
- Again, all other information deemed necessary to construct the building.
- If required information is missing, you can be assured the contractors will ask for it at some point during construction!